



Growing Connections

2021 ANNUAL REPORT

- 2 From the President and the Board Chair
- 3 Growing Connections 2030
- 5 The Impact We Make Together
- 6 Our Global Footprint
- 7 Financial Report
- 8 Our Leadership
- 9 Highlights From the Year
- 14 The Connection Award



ON THE COVER AND ABOVE:

In Guatemala's northern highlands, Emeli (13 months) and her mother, Maria Elizabeth (23), participate in ChildFund's *Juega Conmigo* ("Come Play With Me") project. The LEGO Foundation-supported initiative engages caregivers in predominantly indigenous communities through home-based and guide mother-led group sessions (above) to strengthen their ability to support their young children's development through play. "When we were young, our mothers didn't teach us these things," says Maria Elizabeth, "but there is change now. [Emeli] is learning good things at a very early age. What I want for my daughter as she grows is that she will be smarter and that she can do anything she tries to."

Photos by Jake Lyell



6 Our Global Footprint



PHOTOGRAPHY
ChildFund staff
Jake Lyell

EDITORIAL
Christine Ennulat
Alys Matthews

DESIGN
Communication Design

Dear Friends,

Right now, our world is in a time of massive, accelerated change. The COVID-19 pandemic continues, climate shocks are more frequent, and injustice, inequity and conflict are flaring worldwide. All these pains raise the question: What is it that is trying to be born?

And what does it mean for the world's children? That question has been very much on our minds at ChildFund, especially this year.

The end of our 2017–2020 strategy, Destination 2020, aligns directly with this moment. All that we achieved in those years has positioned us for a strong beginning to our new strategy, Growing Connections, which will drive our work through 2030. Our latest biannual impact report, *Stronger Together: A Story of Connection and Impact*, unpacks the achievements of Destination 2020 as well as our recent crisis responses, programming evidence and more, and you will find a snapshot and link on page 5.

ChildFund's goal in Growing Connections is to significantly multiply our impact and reach by 2030. As the world changes, the people and institutions focused on child well-being must rise to its new challenges and help more children connect with what they need to thrive. And it is more urgent than ever that we rise to those challenges together — so that children can rise to theirs.

To that end, we will significantly scale our programs for children, strengthen our influence within the child development ecosystem, and grow the capabilities to scale impact. We will grow our connections with our partners and supporters, with new partners and new sources of support, and with children themselves. By 2030, we will have built a much, much larger "WE." (See p. 3 for more.)

We all have a part to do. We are so grateful that you, our generous supporters, understand this truth and act upon it, and we are deeply honored that you continue to entrust us with your resources to make a difference.



Anne Lynam Goddard, ChildFund President and CEO

Most of all, we value your attention and care for the world's children, because what we pay attention to grows. And that is a powerful truth indeed.

Our deepest thanks,

**Anne Lynam Goddard
President and CEO**

**Lyn McDermid
Chair, ChildFund Board of Directors**



Jainaba (4) holds freshly harvested eggplants grown in her family's garden in The Gambia.

Growing Connections 2030: ChildFund's New 10-year Strategy

At ChildFund, we accept as a given that the well-being of all of us depends on the well-being of each. We also know that a child's ability to achieve their potential depends on whether they can grow up in conditions that allow them to do so. For all of us, it is critical that they do. Because we need each other.

But right now, the well-being of the world's children is especially at risk. The pandemic has orphaned millions of them, cast millions more back into extreme poverty, and caused mental health issues and learning loss for children worldwide. Climate change intensifies droughts and destructive storms, threatening families' livelihoods and ability to support their children's potential, and over 9 million additional children are expected to slip into malnutrition. Child marriage and other forms of exploitation are increasing as families struggle to cope, and violence is on the rise.

Children's evolving challenges demand bold action. ChildFund's new strategy, Growing Connections, sets ChildFund on a path toward multiplying our impact for children. To do so, we will scale our child-centered programs, influence the child development ecosystem and grow the capabilities needed for scaling our impact. Our bold goal: **By 2030, ChildFund will reach 100 million vulnerable children and family members annually to help children grow up healthy, educated, skilled and safe.**

As we begin, we know what we already do well and that it makes a difference: We have proven core methods and strong foundations to build on. Our Growing Connections strategy puts us on a course to keep pace with the growing urgency of children's needs within the increasingly volatile global context.

Growing Connections includes three strategic directions that will guide our efforts between now and 2030. We will ...

Scale our child-centered programs, addressing persistent and emerging issues affecting children’s development, advancing our current delivery models while developing new ones, and measuring our impact for children across all methods.

Influence the child-focused development ecosystem of various actors and factors affecting the environments where children grow up, from home to global. We intend to evolve our role to become a powerful influencer and partner, collaborating closely with diverse actors to drive meaningful change in policies, practices and perspectives that impact the rights and well-being of children.

Grow the capabilities needed for scaling our impact to reach 100 million children and family members annually, including growing and diversifying our resources, strengthening our culture of engagement and inclusion, and expanding our digital capabilities.

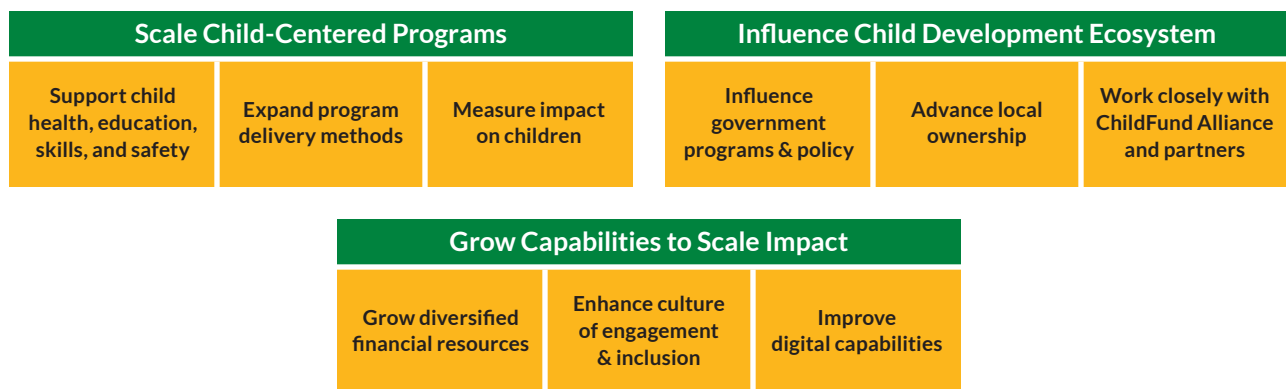
Growing Connections will unfold in a phased approach designed to support our ongoing commitment to the big ideas of the strategy while also enabling us to remain agile within our changing context. In the current pre-scaling phase, we strengthen our core capabilities, identify our best pathways to scale, strengthen internal alignment and prepare to scale. In the second phase, we transition to scale, beginning to scale some elements of our work — such as advocacy — while preparing to scale in others and expanding partnerships, capabilities and funding to support these efforts. Our third phase is about expanding and sustaining our reach and impact.

We are excited and honored to become more effective than ever in connecting children with the people, resources and institutions they need to achieve their incredible potential. Our work with children has never been more urgent.

Growing Connections

Strategic Directions & Objectives

By 2030, ChildFund will reach 100 million vulnerable children and family members annually to help children grow up healthy, educated, skilled, and safe



The Impact We Make Together: ChildFund's Latest Impact Report

In 2017, we affirmed our commitment to ending violence against children by placing child protection at the heart of our organizational strategy, Destination 2020, and embedding it throughout our programs.

Our fourth biennial Impact Report, *Stronger Together: A Story of Connection and Impact*, reflects on the body of work and contributions of our Destination 2020 strategy period as well as ongoing work that preceded and deepened during that interval. The report covers ...

- Our cumulative contributions through our evaluated interventions with children, adolescents and youth in key outcome areas: child protection, education, skills development and health.
- Our global experiences and results in humanitarian crisis response — including the COVID-19 pandemic — in Africa, Asia and the Americas.
- Our contributions to key United Nations Sustainable Development Goal (SDG) targets related to child protection, education, skills development and health.
- Our thought leadership in niche and emerging areas as we begin our 2030 strategy, Growing Connections.

SOME HIGHLIGHTS

Child Protection: More than 50 programs across 18 countries now show at least preliminary evidence of positive change for child protection outcomes in all three regions.

Education: We saw global increases from 2017 to 2019 in caregiver support for learning (“playful parenting”); the proportion of caregivers interacting with children in play or learning activities increased globally from 67% to 86%.

Humanitarian Response: One of our disaster risk reduction (DRR) programs in Kenya helped to increase community knowledge of the main risks associated with floods by 44% (from 26% to 70%), and another DRR program in Indonesia helped to increase the DRR knowledge of young children (ages 5-6).

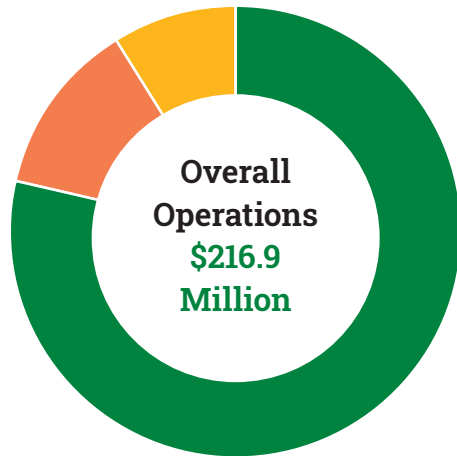
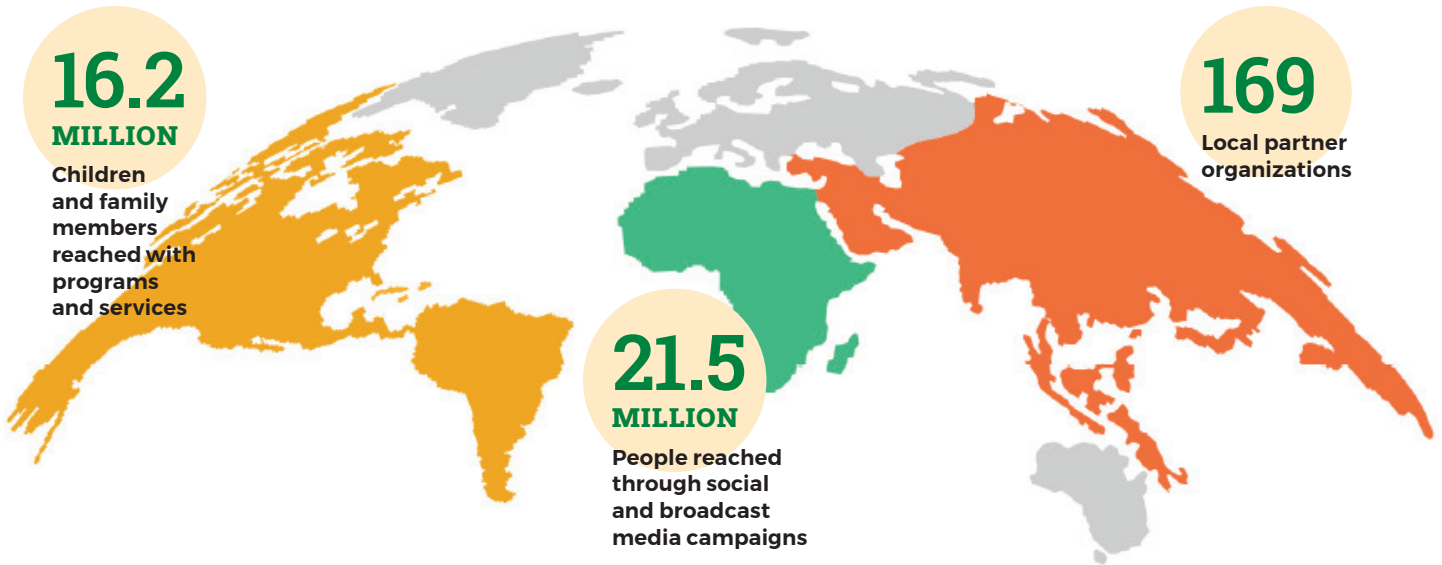
Visit [ChildFund.org/impact-2020](https://www.childfund.org/impact-2020) to read the whole report.



Through our **Jukumu Letu** (“Our Responsibility”) project in Kenya (2018–2021), we saw an increase in children’s involvement in their own protection: The highest increases were in children’s voices being considered on protection issues affecting them (about 91%), children empowered to actively speak out about child abuse (about 90%), and creation of avenues for children to air grievances and give their opinion on issues affecting them (about 82%). This increased involvement is just one of the project’s positive child protection outcomes. [See p. 41 for more.](#)

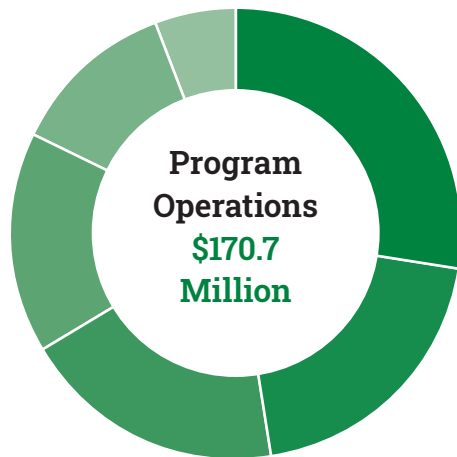
Here, a smiling Angela (12) and friends attend one of Jukumu Letu’s child-rights club meetings.

CHILD FUND'S GLOBAL FOOTPRINT



How Your Gift Helps Children

- 78.7%** Program Services for Children
- 12.5%** Fundraising
- 8.8%** Management and General



Assistance to Children and Families

- 27.5%** Basic Education
- 20.0%** Emergencies
- 19.1%** Health and Sanitation
- 15.7%** Microenterprise (Family Income Generation)
- 12.1%** Early Childhood Development
- 5.6%** Nutrition

FINANCIAL STATEMENTS

ChildFund International Consolidated Statement of Financial Position

AS OF JUNE 30, 2021 AND 2020

	2021	2020
ASSETS		
Cash and cash equivalents	\$33,887,726	\$26,602,570
Investments, at fair value	75,617,697	61,594,084
Beneficial interests in trusts	11,830,978	9,611,857
Receivables and other assets	14,963,939	17,351,561
Property, plant and equipment, net	28,698,469	29,231,200
TOTAL ASSETS	\$164,998,809	\$144,391,272
LIABILITIES AND NET ASSETS		
Liabilities		
Accounts payable and accrued expenses	\$12,166,834	\$11,563,592
Accrued pension benefit liability	2,229,094	7,935,936
Debt	3,520,833	8,379,433
TOTAL LIABILITIES	\$17,916,761	\$27,878,961
Net Assets		
Without donor restrictions	\$76,024,931	\$46,126,343
With donor restrictions	71,057,117	70,385,968
TOTAL NET ASSETS	\$147,082,048	\$116,512,311
TOTAL LIABILITIES AND NET ASSETS	\$164,998,809	\$144,391,272

A complete copy of the Consolidated Financial Statements, with a report from independent auditors, BDO, is available upon request by calling 1-800-776-6767 or visiting ChildFund.org.

ChildFund International Condensed Consolidated Statement of Activities

AS OF JUNE 30, 2021 AND 2020

	2021	2020
PUBLIC SUPPORT		
Sponsorships	\$127,672,444	\$128,533,345
Contributions	68,770,587	61,679,615
Grants and contracts	23,463,582	29,655,257
TOTAL PUBLIC SUPPORT	\$219,906,613	\$219,868,217
Other revenue	3,811,683	2,247,417
TOTAL PUBLIC SUPPORT AND REVENUE	\$223,718,296	\$222,115,634
EXPENSES FROM OPERATIONS		
Program		
Basic education	\$46,905,463	\$60,580,733
Health and sanitation	32,715,379	29,153,910
Nutrition	9,644,568	6,102,093
Early childhood development	20,769,854	16,994,162
Microenterprise (family income generation)	26,597,999	24,255,205
Emergencies	34,111,269	28,759,443
TOTAL PROGRAM	\$170,744,532	\$165,845,546
Supporting Services		
Fundraising	\$27,104,344	\$22,639,005
Management and general	19,087,964	20,319,564
TOTAL SUPPORTING SERVICES	\$46,192,308	\$42,958,569
TOTAL EXPENSES FROM OPERATIONS	\$216,936,840	\$208,804,115
Change in Net Assets from Operations	\$6,781,456	\$13,311,519
Nonoperating Gains (Losses)		
Investment return, net	\$12,700,386	\$384,509
Change in fair value of trusts	2,219,121	57,745
Change in accrued benefit liability other than net periodic costs	5,635,174	(3,261,568)
Gain from extinguishment of debt	3,233,600	
TOTAL GAINS (LOSSES) FROM NONOPERATIONS	\$23,788,281	\$(2,819,314)
Cumulative effect of a change in accounting principle related to revenue recognition		\$6,525,977
Change in Net Assets	\$30,569,737	\$17,018,182
Net assets at beginning of year	\$116,512,311	\$99,494,129
NET ASSETS AT END OF YEAR	\$147,082,048	\$116,512,311



Patrice (4) used to suffer from malnutrition until his mother, Helene, began attending a monthly growth monitoring session and nutritional seminar supported by ChildFund in her community in Senegal.

Now Helene is one of the trained community health volunteers running these sessions.

GLOBAL LEADERSHIP TEAM

Anne Lynam Goddard
PRESIDENT & CEO

Roland Angerer
REGIONAL DIRECTOR, ASIA

Paul Bode
VP, GLOBAL OPERATIONS

Michael Brooks
VP, DIGITAL AND STRATEGY

Adam Hicks
VP, FUNDRAISING AND ENGAGEMENT

Victor Koyi
REGIONAL DIRECTOR, AFRICA

Mario Lima
REGIONAL DIRECTOR, AMERICAS

Naomi Rutenberg
VP, PROGRAMS AND PARTNERSHIPS

Scott Sherman
VP, GLOBAL HUMAN RESOURCES

Sudipto Sircar
VP, INFORMATION TECHNOLOGY

Jim Tuite
VP, TALENT, TECHNOLOGY AND FINANCE

We are honored to work shoulder to shoulder with our ChildFund Alliance partners:

Barnfonden
ChildFund Australia
ChildFund Deutschland
ChildFund Ireland
ChildFund Japan
ChildFund Korea
ChildFund New Zealand
Children Believe
Educo
Un Enfant par la Main
WeWorld

BOARD OF DIRECTORS

BOARD CHAIR

Margaret (Lyn) McDermid
FEDERAL RESERVE SYSTEM
MANAKIN-SABOT, VA

VICE CHAIR

Sarah G. Green
FEDERAL RESERVE SYSTEM
(RETIRED)
NEWBURYPORT, MA

SECRETARY

Cassie Landers
COLUMBIA UNIVERSITY
MEDICAL CENTER
NEW YORK, N.Y.

Makola M. Abdullah, Ph.D.
VIRGINIA STATE UNIVERSITY
PETERSBURG, VA

John B. Adams
THE MARTIN AGENCY
RICHMOND, VA

B.J. Arun
TIE SILICONE VALLEY
SAN JOSE, CA

Tamar Manuelyan Atinc
THE BROOKINGS INSTITUTION
CHEVY CHASE, MD

James Carleton
PRICEWATERHOUSECOOPERS
RICHMOND, VA

Shailendra Chorpade
ENNISMORE CONSULTING, LLC
MONTCLAIR, N.J.

Ed Grier
SANTA CLARA UNIVERSITY
SANTA CLARA, CA

Esther Kestenbaum
RUBY HAS FULFILLMENT
PALO ALTO, CA

Ayesha Khanna
POINTS OF LIGHT
ATLANTA, GA

Enrique Mayor-Mora
CARMAX
MIDLOTHIAN, VA

R. Wheatley McDowell
RICHMOND CAPITAL MANAGEMENT
RICHMOND, VA

Ravi Narula
OOMA
SAN FRANCISCO, CA

Daphne Maxwell Reid
RICHMOND, VA

Geremie Sawadogo
WORLD BANK
SILVER SPRING, MD

Helen Thompson
TOMS EMEA BV
SOMERSET, UK

Edward B. Walker
REGENERATION PARTNERS, LLC
ROANOKE, VA

Aaron Williams
RTI INTERNATIONAL
WASHINGTON, D.C.

Pamela Yee
ATTORNEY
WASHINGTON, D.C.

Miguel Zepeda
BRINK'S MONEY
RICHMOND, VA

INCOMING BOARD MEMBERS 2022

Martin McCann
VICTORIA, B.C., CANADA

Abbie Raikes
UNIVERSITY OF NEBRASKA
MEDICAL CENTER
OMAHA, NE

Bridget Winston
CHIEF
NEW YORK, NY

Highlights From the Year

Toward a whole-child focus in U.S. foreign policy

With the support of a new grant from the **Children's Foreign Policy and Funding Initiative U.S.**, a project of **The Tides Center**, ChildFund is working to influence the U.S. government through advocacy. Our objective is to create a mandate, funding and structural leadership to prioritize children and youth in U.S. foreign policy. An early step was meeting with key members of the Biden-Harris transition team to discuss their goals and objectives for the new administration on the needs of young people abroad. We joined with other organizations working for children's and youth rights in calling on the new administration and Congress to apply a cross-sectoral and life stage approach to global children's and youth issues and to encourage collaboration among government agencies and across sectors. We also developed a [Transition Memo](#) and later a [policy brief](#) with core recommendations, alongside a [progress report](#) on the Biden-Harris administration's words and deeds for children and youth in foreign policy during their first six months in office. We will continue strengthening our efforts to coordinate across civil society and to push the U.S. government to better address the complex lives of young people with complex responses that better support them.

Girls outside a ChildFund-constructed school in Uganda.



Partnering to Protect Children Online

Collaborating for greater impact

In the U.S., through support from the **Oak Foundation**, ChildFund is bringing together domestic and internationally focused civil society organizations that are working to address online sexual exploitation and abuse of children (OSEAC) from different angles — including awareness raising, survivor support, law enforcement training and technology development — into one space to break down silos and identify better ways of working together to advance stronger, more holistic OSEAC-related policies. In June, we hosted the first-ever OSEAC Community Discussion, with representatives from 21 organizations addressing the issue in the U.S. and/or globally, in the first of a series of discussions on current gaps in U.S. government policy and programming and on how best to collaborate in advocacy.

Google awards Kenya \$65K to combat online sex trafficking

ChildFund was one of eight organizations to receive **Google's Africa Online Safety Fund** grants to support our Tukanuke ("Let's Wise Up") project in Kenya — incorporating national research, community, school and media-based training, and policy development — to keep young audiences safe online.

In Kenya, sexual exploitation and abuse of children has accelerated with the rapid expansion of information and communication technologies and the internet. Tukanuke will apply an ecosystem approach to prevent, address and respond to the online sexual exploitation and abuse of children (OSEAC) in several primarily urban sub-counties in Kenya. Efforts will include nationwide research on the scope of OSEAC; community-, school- and media-based training; and policy development to prevent online sex trafficking.

"When we mobilize and sensitize caregivers and community groups, including youth, to prevent and respond to online sexual exploitation," says Chege Ngugi, ChildFund's country director for Kenya, "when we build awareness about positive online engagement, when we promote dialogue between government and internet service providers, and when we all collaborate toward strong strategies, policies and plans to address this issue — only then — children will be much, much safer."

In Kenya, 17-year-old Consolata owns no phone but is familiar with online risks, especially among children in informal settlements. "Even before the internet boom," she says, "girls were at risk both at home and outside, and now child predators can find them anywhere the moment they log into any social site." Consolata wants to see parents become more aware and vigilant for their children.



Connecting to Help Children in Crisis

Two hurricanes and a pandemic

In November 2020, just 13 days after Hurricane Eta devastated Central America, the even more powerful Hurricane Iota roared through the region, severely compounding Eta's destruction amid the ongoing hardships of the COVID-19 pandemic. In Guatemala and Honduras, the storms caused mudslides and flooding that destroyed roads and houses, created major health risks including food insecurity and lack of clean drinking water, and caused injuries and deaths.

ChildFund provided affected families food baskets as well as hygiene and sanitation essentials. For children and families forced to take refuge in temporary shelters, we hired psychologists to help them process their trauma and losses. Longer-term recovery and disaster risk reduction efforts included the creation of terraced gardens (like 9-year-old Juan's family's plot in Guatemala, pictured here) and providing training and equipment so families can produce food, sustain a livelihood and reduce soil erosion, preventing future mudslides.



Juan, 9, Guatemala



Our deepest gratitude to our longtime partner Taiwan Fund for Children and Families for their support in Central America and for other emergency responses.



Dewi, 27, and daughter Nabila, 9

An earthquake, then a cyclone in Indonesia

By January 2021, when a 6.2 magnitude earthquake struck West Sulawesi, Indonesia, fourth-grader Nabila had already been out of school for a year. In the IDP camp where she and her mother found themselves with the loss of their home, ChildFund provided psychosocial support and distributed kits containing recreational and educational items, reaching 500 children there and in surrounding areas.

Then, in early April, Tropical Cyclone Seroja hit Indonesia's East Nusa Tenggara province, killing dozens and displacing 22,000 people. Our response there also included basic needs and psychosocial support, as well as disaster risk reduction education to help children and youth understand the risks of disasters and how to stay safe.



India's devastating second COVID wave

When a second wave of COVID-19 surged throughout India a year into the pandemic, ChildFund India partnered with **Project HOPE**, a global health and humanitarian aid group, to scale our COVID-19 response in highly vulnerable communities throughout 15 states. This included equipping local health care centers with basic medical equipment and frontline workers with PPE and medical essentials, as well as improving access and affordability of vaccines.

Young people were integral in delivering relief to families during India's second COVID surge.

New partnerships help migrating families

This year, with partners **Plan International** and fellow ChildFund Alliance member **Educo**, ChildFund launched the Camino Protegido (Protected Passage) program. The three-year project supports children, especially girls 10 to 18 years old, migrating Guatemala, El Salvador, Honduras and Mexico as they wait during asylum processes in shelters and communities along the migration route, and as they return to these countries. Support they receive while there includes daily food, diapers, medical equipment, educational and psychosocial support, as well as computer and play equipment.

Meanwhile, further south, ChildFund Ecuador signed a cooperation agreement with the United Nations' **International Organization for Migration** toward sharing knowledge and complementing each other's strengths to stabilize families who have migrated from Venezuela in five Ecuadorean cities. Starting by helping women improve capacities for entrepreneurship, ChildFund's holistic approach includes protecting these families' human rights and fostering safer, more inclusive host communities that value, protect and advance their rights and welfare.



Commuters, cargo and people migrating cross the Suchiate River that forms the border between Guatemala and Mexico.



Delivering Goods for Good

Schoolchildren in The Gambia are going places – on bikes

In The Gambia, ChildFund handed over 1,000 bikes to local partners to give to children, primarily to ride to school. They were donated under ChildFund’s Dream Bikes project, which aims to provide 10,000 bikes to schoolchildren who need them. Ensuring that kids get physically to school today gives them the chance to go where they want in life tomorrow.

Isataou’s (11) two-hour walk to school turned into a 20-minute ride when ChildFund gave her a Dream Bike, along with a reflective vest and helmet for added safety on the roads she travels.

Sierra Leone trucks in medical supplies

ChildFund Sierra Leone donated a 40-foot container filled with assorted medicines and medical equipment to the country’s Ministry of Health and Sanitation to fight COVID-19 and support children’s and mothers’ health. This gift in kind from **MAP International** is the fourth donation the country office has made since March 2020, when the virus first reached the country.

Isatu received prenatal care at her local health clinic, where she benefited from medicines donated through ChildFund. Daughter Salamatu, now 1, also has access to medicines as she needs them.





What We Pay Attention to Grows: ChildFund's Connection Award

Each year throughout our Growing Connections 2030 strategy, ChildFund will award the Connection Award to a ChildFund initiative that embodies, leverages and/or promotes connection to improve children's well-being. The purpose of this internal award is to celebrate and inspire our growing practice of connection and to showcase the many diverse, innovative ways it fuels our work with children and families every day.

ChildFund's first Connection Award winner is ChildFund Brazil's Rede de Juventudes em Defesa dos seus Direitos Sociais (REJUDES, or the Youth Network in Defense of Social Rights).

Connection is the essence of REJUDES: connections among the youth who make up the network, ChildFund Brasil, the local partner implementing organizations, youth from other networks, and Brazilian collectives. Through the initial connection of a public policy monitoring group in one of our program areas, young people felt the need for an expanded network to achieve and implement their social rights. So, in 2015, they made it happen. Now engaging nearly 7,500 young people across 24 municipalities, REJUDES is an open space for connection, discussion, reflection, training and sharing of experiences and proposals. It has also connected with global movements, governments, human rights initiatives, and Agenda 2030, the United Nations' "plan of action for people, planet and prosperity."

"At REJUDES," says José, 19, "I learned that I can look to others for support and that it's the right thing to do. I learned that I can and should express myself, showing what I feel, and I learned that I am capable of doing extraordinary things the way I want to. ... REJUDES is more than a movement, it's more than an initiative or methodology. REJUDES is like a family that welcomes you in, helps you and encourages you on your journey."

"REJUDES is more than a movement, it's more than an initiative or methodology. REJUDES is like a family that welcomes you in, helps you and encourages you on your journey."

– José, 19, REJUDES participant

The other four finalists

We received 18 entries built on connections of all kinds, from agricultural projects to corporate partnerships to a disaster risk reduction app to sponsorship enhancements and more. Here are the other four finalists:

Building Resilience and Protection Systems (BRePS) – Uganda

In northern Uganda's Palorinya Refugee Settlement, home to over 122,000 people who have fled conflict in South Sudan, BRePS uses community radio to raise awareness among 10 villages about gender-based violence, child protection, COVID prevention and more.

The ChildFund Village – Global

The ChildFund Village is a Facebook group created to cultivate a community of supporters and digital volunteers.

Pilot Testing of the Project RAMDAM Application – Philippines

This mobile app and web portal are designed to facilitate local government emergency response, with a focus on women and children's needs.

Plastic waste management for economic well-being and sustainable environment in urban informal settlements in Kenya / Environmental protection and economic integration project in Ethiopia

Funded by Dow Chemical, both projects in this joint submission focus on environmental conservation through plastic waste management and improving economic well-being of vulnerable communities living in urban and peri-urban informal settlements.



When we met Kerali in India in 2019, ChildFund's local partner organization found her to be suffering from acute malnutrition. With training and support from ChildFund, her mother turned that around. Now Kerali, front and center at right, is healthy and enjoying preschool with her friends.

Thank you for your partnership and support — especially now.

When children's needs are met, they can do what children do best: play, learn and grow into the people they dream of becoming.

For nearly 85 years, ChildFund has worked with millions of children worldwide to connect them with the people, resources and institutions they need to thrive, even in the most challenging circumstances. Our Children's Greatest Needs fund — a special fund with the flexibility to be directed where it is needed most — is an important part of that work. We use it to develop and run far-reaching programs and services for and with children, families and their communities. Donating to Children's Greatest Needs is a great way to make a powerful difference in more lives than you might imagine. These kind gifts have been especially vital for children throughout the pandemic.

To learn more about this and other ways to help, please contact our philanthropy advisors at 804-545-3620.

WWW.CHILDFUND.ORG

1-800-776-6767

Member of ChildFund Alliance



ChildFund
International

ChildFund International works throughout Asia, Africa and the Americas to connect children with what they need to grow up healthy, educated, skilled and safe, no matter where they are. Last year, we reached 16.2 million children and family members in 24 countries.

OUR MISSION

Help children who experience deprivation, exclusion and vulnerability to build the capacity to improve their lives and become young adults, parents and leaders who bring lasting and positive change in their communities.

Promote societies whose individuals and institutions participate in valuing, protecting and advancing the worth and rights of children.

Enrich supporters' lives through their engagement with us.