

**1 billion** youth in developing countries will reach employment age in the next decade. The youth population in these countries today is the largest the world has ever seen — nearly 1.3 billion.

economic, health and social outcomes for young people and for their children. Negative outcomes of early pregnancy and sexually transmitted infections, including HIV, threaten the health of people in the second decade of life more than in any other age group.

ChildFund, in partnership with the local community and other groups, strives to enable youth to have the capacity to improve their lives so they may become successful young adults, parents and leaders. We want them to be able to contribute to their families and communities, just as Simon now does. With opportunity, youth can bring lasting and positive change, even becoming role models. ChildFund recognizes this window of opportunity and provides youth with access to resources, knowledge and opportunities for engagement, helping them to become self-confident, strong, productive and secure individuals. In our work with youth, we focus on

- ▶ livelihoods,
- ▶ reproductive health services and education, and
- ▶ leadership development.

We believe that young people need to have the skills to be positively employed, be prepared to make wise decisions, and have the experience of working with others to improve their community.

### **Youth Employment**

Simon is one of the 1.3 billion youth who make up 47 percent of the world's unemployed. Employment not only gives these youth the income they need to meet their daily needs, but provides them an important sense of self-worth. ChildFund youth programs give youth the skills they need to successfully transition into the workplace. Market assessments are conducted to identify business opportunities with strong potential. Youth are then given related skills training, which in turn leads to employment in a field with decent wages and in a nonexploitative environment.

### **Youth-Friendly Reproductive Health Services and Education**

Providing guidance and information on reproductive health services also plays a role in the success of youth. Gloria, a 17-year-old living in Bula Matady, a community in the city of Lubango, Angola, can attest to this. She was a child when her family moved there after being



displaced from their home during Angola's civil war. Along with her peers, she dropped out of school as a teenager so that younger children in Bula Matady could attend school. Gloria's life was further complicated when she became pregnant at 15.

Seeking help, Gloria received training in life skills such as decision making, gender equality and reproductive health for adolescents and young people. She also learned about preventing sexually transmitted illnesses, HIV and AIDS. In the process, she learned that having the right information can change lives. Now having completed peer educator training, Gloria works hard to share this information by counseling youth in her community. She uses her life experience as a single mother to better relate to those she is helping.

"The more people have knowledge about reproductive health and family planning, the fewer risks we will have," Gloria said. "An unplanned responsibility is hard. It is good to know about family planning ahead of time ... when we are older we will be more conscious of what we can do."

Gloria's sharing of her knowledge is critical given that early pregnancy and sexually transmitted infections threaten the health of youth more than any other age group. Adolescents and youth are becoming increasingly vulnerable to sexual exploitation and abuse, as evidenced by the increasing numbers of young people living with HIV. Reproductive health facilities in the developing world are better suited to serving older community members, not youth. According to the World Bank, adolescent girls face cultural, age, and gender related obstacles when seeking reproductive health services and are too often served by

## DONOR PARTNERSHIPS

As one ChildFund sponsor started to plan his holiday gift list a few years ago, he discovered a place where he could buy a gift that "keeps on giving." This sponsor's generosity helped more than 263 children attend a school for developmentally disabled children in rural Uganda. He also provided funds for tools and seeds for garden programs in the Caribbean and Central America.

## STRENGTH IN NUMBERS

In Afghanistan, with financial support from BPRM (U.S. State Department's Bureau of Population, Refugees and Migration), 14 schools were developed impacting more than 13,000 children, and providing facilities to offer literacy and life skills training to over 24,000 youth. During skills training, youth are identified who are eager to start their own businesses. They are then formed into self-help groups so they can access loans for start-up funding.

unsupportive health care providers. ChildFund programs work to put mechanisms in place to make health and reproductive guidance readily available in a safe and unthreatening environment.

### Leadership and Social Engagement

Young people's perspectives are invaluable in developing relevant and quality community decisions. Building the capacity of and creating sustained partnerships with all involved youth are crucial strategies to further community, country and global development. Youth led initiatives give young people a sense of competence, responsibility, and achievement that manifests itself as social confidence and leads to a more positive and fulfilling future.

In several countries where ChildFund works, youth are speaking up and being heard. In Timor Leste, youth established the Conflict Management and Youth Development project, organizing a National Youth Forum. Fifty-one youth delegates from all districts of the country influenced peace-building efforts, not only impacting their country but discovering that they can offer valuable insight that is heard. The youth declared their sentiment before UN agencies, other nongovernmental agencies and interfaith organizations. As a united group, they asked for an end to the east and west conflict among Timorese people. They gave speeches and participated in workshops and team building events.

In Uganda, youth formed the Youth Mentoring Development project where they became equal voices alongside their adult counterparts. And in Afghanistan, young people are mobilizing and leading community dialogs with adults on gender based violence.

This strong focus on youth allows them to make the critical transition into adulthood. ■

# Where We Work



**Color Key**

- ChildFund Alliance Program Countries
- ChildFund International and ChildFund Alliance Countries

# ChildFund Program Expenses



**ChildFund International** celebrates its 71st year as a dynamic global force for children working in 31 countries. It now reaches 15.2 million children and family members. Through our membership in the ChildFund Alliance, a family of 12 like-minded organizations, assistance is extended to children in 55 countries around the globe.

For further information, visit our Web site at [www.ChildFund.org](http://www.ChildFund.org)

## Africa

Angola	\$ 4,538,084
Chad*	1,246,027
Ethiopia	9,232,474
The Gambia	4,010,421
Guinea	2,142,007
Kenya	12,387,455
Liberia	1,966,456
Mozambique	2,227,980
Senegal	10,139,181
Sierra Leone	3,481,918
Togo	232,096
Uganda	7,740,328
Zambia	6,578,598
<b>Subtotal:</b>	<b>\$ 65,923,025</b>

## Asia

Afghanistan	\$ 4,270,204
Cambodia	60,030
India	12,585,744
Indonesia	7,422,080
Philippines	8,030,134
Sri Lanka	4,926,268
Timor Leste	2,726,667
Thailand	4,349,168
Vietnam	915,795
<b>Subtotal:</b>	<b>\$ 45,286,090</b>

## Caribbean

Dominica	
St. Vincent	
<b>Subtotal:</b>	<b>\$ 1,832,045</b>

## Eastern Europe

Belarus	
<b>Subtotal:</b>	<b>\$ 1,052,697</b>

## Latin America

Bolivia	\$ 5,705,427
Brazil	16,271,912
Ecuador	5,083,405
Guatemala	5,992,945
Honduras	8,352,345
Mexico	7,381,083
<b>Subtotal:</b>	<b>\$ 48,787,117</b>

## United States

Mississippi	
North Dakota	
Oklahoma	
South Dakota	
Texas	
<b>Subtotal:</b>	<b>\$ 3,240,152</b>

**TOTAL: \$ 166,121,126**

\*Program Completed



# Financial Statements

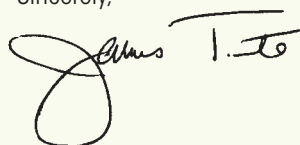
## A Message from the Chief Financial Officer

It has never been so important and reassuring in these most economically challenging times that you, our sponsors and contributors, continue to support the critical needs and programs of your child and other children in the communities where we work. This year, ChildFund has had to do more with less and we have met that challenge by maintaining our program services for more than 15.2 million children and family members, the same level as in the previous year.

ChildFund International has worked hard to ensure it is accountable for the funds it receives for children. We continually conduct audits to oversee that each dollar is being spent efficiently and effectively. I personally visited communities from an urban center of Ethiopia to the highlands in Vietnam to confirm firsthand with children that their lives are improving. We are proud that 81 cents of every dollar went to support direct programming to benefit children.

Your financial support has gone a long way to positively impact the lives of your child and the children in their communities, and we wholeheartedly thank you for continuing to make that sacrifice in light of the economic realities. We will ensure that we maximize the funds we receive for better outcomes for children in the communities ChildFund serves.

Sincerely,



James Tuite  
Vice President, Finance &  
Operations/Chief Financial Officer

## ChildFund International CONSOLIDATED STATEMENTS OF FINANCIAL POSITION

As of June 30, 2009 and 2008

	2009	2008
<b>ASSETS</b>		
Cash and cash equivalents	\$ 23,383,045	\$ 11,234,398
Investments, at fair value	28,034,554	35,046,331
Accounts receivable	8,845,631	9,284,019
Land, buildings and equipment, net	13,825,862	14,609,458
<b>TOTAL ASSETS</b>	<b>\$ 74,089,092</b>	<b>\$ 70,174,206</b>
<b>LIABILITIES AND NET ASSETS</b>		
<b>Liabilities</b>		
Accounts payable and accrued expenses	\$ 16,458,161	\$ 17,620,175
Accrued benefit liability	7,152,790	3,364,980
<b>TOTAL LIABILITIES</b>	<b>23,610,951</b>	<b>20,985,155</b>
<b>Net Assets</b>		
Unrestricted	13,862,323	14,218,514
Temporarily restricted	28,486,156	27,028,138
Permanently restricted	8,129,662	7,942,399
<b>TOTAL NET ASSETS</b>	<b>50,478,141</b>	<b>49,189,051</b>
<b>TOTAL LIABILITIES AND NET ASSETS</b>	<b>\$ 74,089,092</b>	<b>\$ 70,174,206</b>



# Financial Statements

## ChildFund International CONDENSED CONSOLIDATED STATEMENTS OF ACTIVITIES AND CHANGES IN NET ASSETS

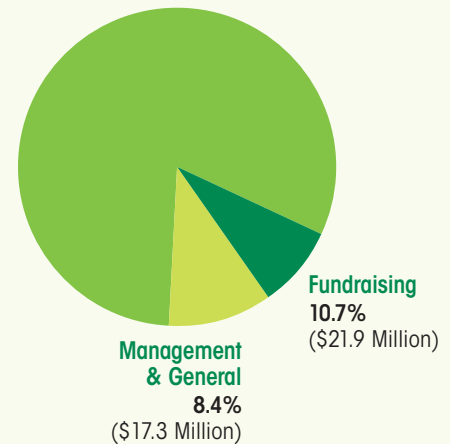
For the years ended June 30, 2009 and 2008

	2009	2008
<b>PUBLIC SUPPORT</b>		
Sponsorships	\$ 164,542,642	\$ 172,319,808
Contributions	24,710,062	28,218,505
Grants	27,000,516	27,021,698
<b>TOTAL PUBLIC SUPPORT</b>	<b>216,253,220</b>	<b>227,560,011</b>
Other Revenue	1,785,495	2,249,278
<b>TOTAL PUBLIC SUPPORT &amp; REVENUE</b>	<b>218,038,715</b>	<b>229,809,289</b>
<b>EXPENSES</b>		
<b>Program</b>		
Education	51,241,712	53,069,318
Health and Sanitation	41,134,530	48,674,687
Nutrition	15,192,590	18,042,085
Early Childhood Development	27,610,282	27,480,339
Micro-Enterprise (Family Income Generation)	19,022,820	20,619,523
Emergencies	11,919,192	17,541,433
<b>TOTAL PROGRAM</b>	<b>166,121,126</b>	<b>185,427,385</b>
Fundraising	21,888,780	21,979,683
Management and General	17,268,244	15,905,100
<b>TOTAL EXPENSES FROM OPERATIONS</b>	<b>205,278,150</b>	<b>223,312,168</b>
Change in Net Assets from Operations	12,760,565	6,497,121
<b>Non-Operating Revenues (Expenses)</b>		
Realized gain (loss) on investments	(633,730)	1,267,494
Unrealized gain (loss) on investments	(6,505,488)	(1,364,082)
Change in accrued benefit liability other than net periodic costs	(4,332,257)	(2,920,284)
<b>Change in Net Assets</b>	<b>1,289,090</b>	<b>6,400,533</b>
Net assets at beginning of year	49,189,051	45,708,802
<b>NET ASSETS AT END OF YEAR</b>	<b>\$ 50,478,141</b>	<b>\$ 49,189,051</b>

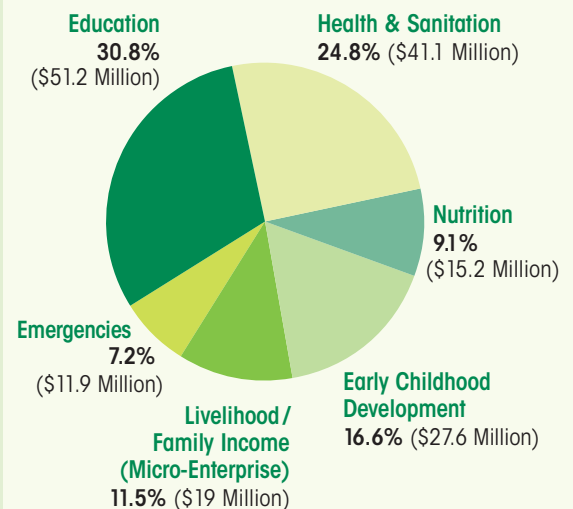
A complete copy of the Consolidated Financial Statements with a report from independent auditors, and auditor's certification, KPMG LLP, is available upon request by calling 1-800-776-6767, or visiting our Web site [www.ChildFund.org](http://www.ChildFund.org).

## How Your Gifts Help Children

Program Services for Children  
80.9% (\$166.1 Million)



## Areas of Assistance to Children and Families



# ChildFund Around the World

## BOARD OF DIRECTORS

### CHAIRMAN

**Charles M. Caravati Jr., M.D.**  
*Physician (Retired)*  
Manakin-Sabot, Virginia

### 1ST VICE CHAIR

**Karen Hein, M.D.**  
*Pediatrics Professor (Retired)*  
Jacksonville, Vermont

### 2ND VICE CHAIR

**A. Hugh Ewing III**  
*Ewing Bemiss & Co.*  
Richmond, Virginia

### SECRETARY

**Louis B. Weeks, Ph.D.**  
*Clergyman/Seminary  
President (Retired)*  
Williamsburg, Virginia

### TREASURER

**A. Scott Andrews**  
*Harvest Equity Partners LLC*  
Middleburg, Virginia

### MEMBERS

**Jesús M. Amadeo**  
*Manpower Demonstration  
Research Corp.*  
New York, New York

**Roger L. Gregory**  
*Government Employee*  
Richmond, Virginia

**Marilyn Grist**  
*Professional Consultant*  
Atlanta, Georgia

**Sarah Hanson**  
*Partners & Napier*  
Rochester, New York

**Barbara Joynes**  
*The Martin Agency*  
Richmond, Virginia

**William E. Leahey Jr.**  
*Corporate Executive (Retired)*  
New York, New York

**Darrell D. Martin**  
*Corporate CFO (Retired)*  
Richmond, Virginia

**Maureen Denlea Massey**  
*Executive (Retired)*  
Richmond, Virginia

**Velma McBride Murry, Ph.D.**  
*Vanderbilt University*  
Nashville, Tennessee



ChildFund International Board of Directors

**Robert F. Norfleet Jr.**  
*Corporate Executive (Retired)*  
Richmond, Virginia

**John C. Purnell Jr.**  
*Friends Association*  
Richmond, Virginia

**Masood Z. Rehmani, M.D.**  
*Behavioral Health Center*  
Sarasota, Florida

**Thomas A. Siegfried**  
*Commercial Contractor  
(Retired)*  
Sarasota, Florida

**Peter J. Tanous**  
*Lynx Investment Advisory LLC*  
Washington, DC

**Lynn Vernon-Feagans, Ph.D.**  
*UNC-Chapel Hill*  
Chapel Hill, North Carolina

**Thomas Weisner, Ph.D.**  
*UCLA*  
Los Angeles, California

**Brian Wilcox, Ph.D.**  
*University of Nebraska*  
Lincoln, Nebraska

### LEGAL COUNSEL

**T. Justin Moore III**

### INTERNAL/EXTERNAL AUDITORS

**RSM McGladrey Inc.**  
**KPMG LLP**

### EXECUTIVE TEAM

**Anne Lynam Goddard**  
*President & CEO*

**Cheri W. Dahl**  
*Vice President, Communications  
& Public Affairs*

**Charles R. Davy**  
*Vice President, Asia Region*

**Isam M. Ghanim**  
*Vice President, Africa Region*

**Dula C. James, Ph.D.**  
*Vice President, Americas Region*

**Michael A. Pressendo**  
*Vice President, Global Marketing  
& Strategic Resources*

**Anne W. Scott, Ph.D.**  
*Vice President,  
Global Programs*

**James M. Tuite, CPA**  
*Vice President,  
Finance & Operations/CFO*

**Diane H. Willis**  
*Vice President,  
People & Culture*

### CHILDFUND ALLIANCE MEMBERS

#### CHILDFUND AUSTRALIA

**Michael Rose**  
*Chairman*

**Nigel Spence**  
*Chief Executive*

#### CHRISTIAN CHILDREN'S FUND OF CANADA

**Paul Newbigging**  
*Chairman*

**Mark Lukowski**  
*Chief Executive Officer*

#### BORNEFONDEN, DENMARK

**Stine Bosse**  
*Chairman*

**Annette Ludeking**  
*Chief Executive*

#### UN ENFANT PAR LA MAIN, FRANCE

**Pierre Jablon**  
*President*

**Thomas Scrive**  
*Director*

#### CHILDFUND DEUTSCHLAND

**Dr. Barbara Holzbaur**  
*President*

**Joern Ziegler**  
*Managing Director*

#### CHILDFUND IRELAND

**Shay O'Malley**  
*Chairman*

**Michael Kiely**  
*Chief Executive*

#### CHILDFUND JAPAN

**Masanobu Fukamachi**  
*Chairman*

**Takeshi Kobayashi**  
*Executive Director*

# ChildFund Around the World

## CHILDFUND KOREA

Je Hoon Lee  
*Chairman*

Suk San Kim  
*President*

## CHILDFUND NEW ZEALAND

Ron Hooton  
*Chairman*

Paul Brown  
*Chief Executive*

## BARNFONDEN, SWEDEN

Klas Olofsson  
*Chairman*

Maria Thomelius  
*Secretary-General*

## TAIWAN FUND FOR CHILDREN AND FAMILIES

Po Rung Lin  
*Chairman*

Miguel Ming-Jen Wang  
*Executive Director*

## CHILDFUND INTERNATIONAL

Charles M. Caravati Jr., M.D.  
*Chairman*

Anne Lynam Goddard  
*President & CEO*

## PROGRAM COUNTRY REPRESENTATIVES

### AFGHANISTAN

George Nzomo  
*National Director*

### ANGOLA

Filomena Andrade  
*National Director*

### BELARUS

Irina Mironova  
*National Director*

### BOLIVIA

Jose Antonio Munoz, M.D.  
*National Director*

### BRAZIL

Gerson Pacheco  
*National Director*

### DOMINICA/ST. VINCENT

Francis Joseph  
*National Director*

### ECUADOR

Carlos Montufar  
*National Director*

### ETHIOPIA

Hubert Charles  
*National Director*

### THE GAMBIA

Eustace Cassell  
*National Director*

### GUATEMALA

Mario Lima  
*National Director*

### GUINEA

Micheal Salifu Mamudu  
*National Director*

### HONDURAS

Norma S. de Sierra  
*National Director*

### INDIA

Siva Subramanian  
*Acting National Director*

### INDONESIA

Sharon Thangadurai  
*National Director*

### KENYA

Victor Koyi  
*National Director*

### LIBERIA

Falie C. K. Baldeh  
*National Director*

### MEXICO

Virginia Vargas  
*National Director*

### MOZAMBIQUE

Raymond McArdle  
*National Director*

### PHILIPPINES

Dennis O'Brien  
*National Director*

### SENEGAL

Emile Namsemon N'Koa  
*National Director*

### SIERRA LEONE

Daniel Kaindaneh  
*National Director*

### SRI LANKA

Guru Naik  
*National Director*

### THAILAND

Kanchada Piriyaarangsarn, Ph.D.  
*National Director*

### TIMOR LESTE

Geoffrey Ezepue, M.D.  
*National Director*

### UGANDA

Simba Leonard Machingaize  
*National Director*

### UNITED STATES

Open

### ZAMBIA

Ely Keita  
*National Director*



# ChildFund<sup>®</sup> International

2821 Emerywood Parkway  
Richmond, Virginia 23294-3725 USA

1-800-776-6767

[www.ChildFund.org](http://www.ChildFund.org)

Member of **ChildFund**  
Alliance





## ChildFund International

2821 Emerywood Parkway  
Richmond, Virginia 23294-3725 USA  
1-800-776-6767

Nonprofit  
U.S. Postage Paid  
ChildFund  
International

ChildFund<sup>®</sup>  
International

1-800-776-6767 • [www.ChildFund.org](http://www.ChildFund.org)

Member of ChildFund.  
Alliance

